



Republic of Mozambique

Ministry of Land, Environment and Rural Development

Mozambique Presentation

Regional Symposium on Strengthening the Capacities of Public Institutions developing effective Partnerships to realize the 2030 Agenda for Sustainable Development

Data GAPS AND STATISTICAL CAPACITY BUILDING

Incheon –South Korea , 24-26 October 2018



SOCIAL & ECONOMIC AND ENVIRONMENT TRENDS

- Mozambique has grown at approximately 7 percent over the past 20 years, driven by capital-intensive foreign direct investment in mega projects
- Preliminary results of the population census completed during 2017 by the National Institute for Statistics (INE) indicate a total population of 27 million. By 2040, Mozambique may have 53 million people, which would make it the 10th most populous country in Africa
- Over 80 percent of the population depend directly on natural capital for their livelihoods, including subsistence farming and artisanal fishing for food, forest biomass for energy, and rivers and lakes for water supply. Continued rapid population growth will put additional strain on public services, natural capital assets and adaptive capacity for climate change

OIL& GAS DEPOSITS IN ROVUMA BASIN OOF SHORE

- ❑ Mozambique is already the 13th country in the world with more fossil fuel reserves. Only in 2012 were discovered more than 100 billion cubic feet of natural gas on national soil. The northern region of the Rovuma River, in the province of Cabo Delgado, is today the most promising for the development of the oil and gas sector in the country
- ❑ The value of the current investment is around US \$ 25 billion for the development of a value chain that includes everything from the implantation of the industries to the gasification centers.



Institutional Framework for SDGs

**ENTRY POINTS FOR MAINSTREAMING SUSTAINABLE
DEVELOPMENT GOALS INTO NATIONAL DEVELOPMENT
PLANNING**

Planning Level	Entry Points
National Government and Cross-sector Ministries	<input type="checkbox"/> National Development Strategy
	<input type="checkbox"/> Five Government Program outlines Priority V : Sustainable management of natural resources and Environment <u>section 59</u> : Ensure the integration of blue-green economy and green growth under the national development priorities of Mozambique
	<input type="checkbox"/> National Program for Sustainable development fully aligned with 2030 Agenda
Sector Ministries	<input type="checkbox"/> The Climate change adaptation and Mitigation Strategy
	<input type="checkbox"/> Sector Strategies, plans and policies (eg. Rural development National Strategy <input type="checkbox"/> Master Plans
Subnational authorities (local)	<input type="checkbox"/> Masters Plans
	<input type="checkbox"/> District Strategic Plans

Inter sectorial Coordination for SDGs

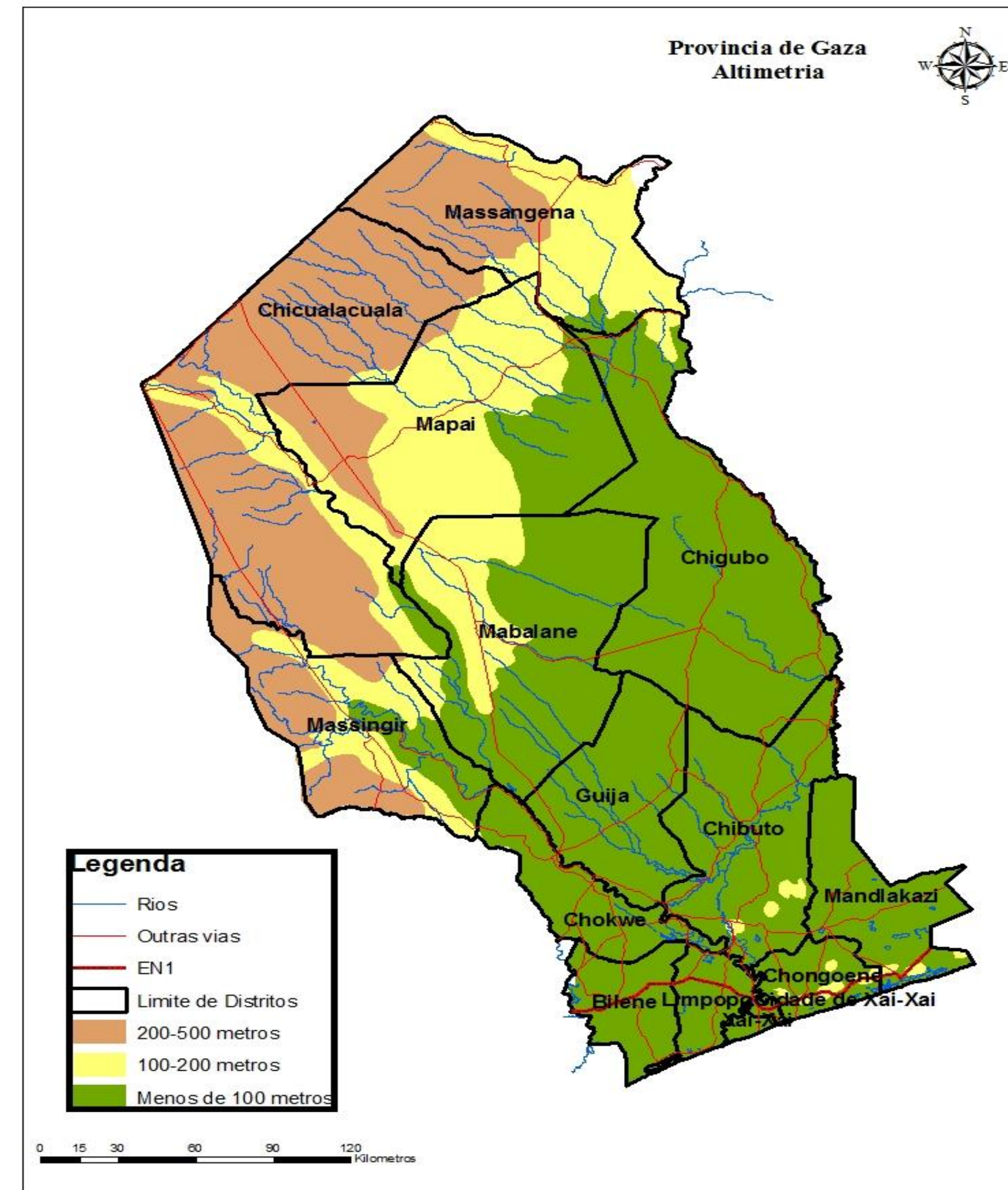
- ❑ The Ministry of Economy and Finance is lead institution for coordination and implementation mechanisms
- ❑ Ministerial Reference Group (Composed by different Ministries, each Ministry capture/tracking SDGs indicators aligned with their sector Indicators

Best Practices and efforts to Domesticate and Strength the SDGs

- ❑ The Development of SDGs National Guideline (under coordination of Economy and Finance)
- ❑ (ii) Formulation of the domestication SGD's document which prioritises the identification of key relevant environment indicators(under the Ministry of Land, Environment and Rural development) aligned with SGD's
- ❑ Under elaboration of the First National Review Report on SDGs

Pilot Initiatives domesticating SDGs :integrating green economy and Sustainable issues at local level

- **Objective** : *improve local economy and livelihoods by integrating the green economy options into local economic and social plans*
- **Selected districts for pilot phase:** *2 districts (Bilene & Chokwe), both located in Gaza province in the South region of Mozambique.*



Step by step Guide

Providing training and capacity building for local policy planners on the design the economy and social plans, by integrating the green economy indicators into the proposal (I)



- (I) Review the Economy and social District plans in order to integrate sustainability and green indicators
- (II) Identified two critical areas for sustainable development of both Districts (Bilene – Tourism and Water/ Chokwé- Agriculture and Fishery)
- (III) Supporting the elaboration of projects linked/contribute for achieving green economy agenda and sustainability (I.e. Conservation farming, empowering local communities for eco-tourism, sustainable fishery)
- (IV) Assisting the local planners to develop resource mobilization and fundraising for potential partners (activities focus on sustainability)

Example : matrix
Selected green economy indicators translated into social and economic plans

PRIORITY/PILLAR: Ensure the Sustainable management of natural resources and Environment							
Strategic goal (ii) Ensure the integration of green economy and green agenda into national development policies, management of ecosystems conservation, biodiversity and sustainable use of resources							
Program : Environment Sustainability							
Sub Program of : 40-05 - Management of natural resources							
Output Indicator Sub Program							
Num of activ	Description	Outcome Indicator	Goal	Location	Beneficiaries	Budget per activity	Source of Budget
23	Promotion of conservation of Biodiversity areas	Number of conservation monitoring site visits	6	National parks of Limpopo e Banhine	Population	300.00	State Budget
		Number of training and awareness sessions	4		Communities living in the area	200.00	External funds

Key Challenges

- ❑ Isolated initiatives ^ efforts duplications (lack of harmonization , isolated initiatives and ineffective communication mechanisms)
- ❑ Improve Institutional coordination mechanism, (the policy formulation of plans/programs has more focus on integrated format than the sectorial approach and also the Budget allocation guidelines applies the same approach)
- ❑ still faces limited capacities to adapt the SGDs to the local Government due the lack technical human resources and financing to implement it.
- ❑ Weak involvement of non-state sectors mainly the private sector on issues regarding the sustainability
- ❑ Improve the use and production of statistical information
- ❑ Monitoring and evaluations of PPPs (mainly at sub national level), need of defining the appropriate indicators looking at local context,
- ❑ Ineffective data collection and Information
- ❑ ineffective protocols mechanism of information sharing and other instruments to provide and share information on real time (mainly on local level- limited access internet and ITC instruments

Efforts and steps to address statistics gaps, data and information sharing

Sectorial level

- ❑ Under development of the national platform on statistics management (weakness : still one sector initiative)
- ❑ The elaboration of strategic plan for statistics Environment (this tool is help to identify the SGDs indicators and assess the indicator performance
- ❑ Training and capacity Building for local level planners (on topics related to Green economy planning and resource mobilization, due to limited resources a few training were conducted and lack of expertise)
- ❑ Identify and Mobilizing the champions (Institute for national statistics is supporting the production of Environment statistics for Ministry responsible for environment)

Support and needs assessment

- ❑ Resource mobilization and partnerships arrangements (
- ❑ Provide Guidance, Tool kits on SDGs at subnational levels
- ❑ feasibilities studies on SDGs and localizing SDGs at local level
- ❑ Technical assistance for environment statistics guide and strategic environment assessment
- ❑ High level workshops on SDGs and sensitise strategic tools targeting high level decisions makers,(Permanent secretariat, policy makers and also for the private sector (mainly financial institutions, sustainable investment approach)
- ❑ Improve the data collection, database and information sharing
- ❑ Design of medium/long term plan (Institutional capacity building)

**THANK YOU
OBRIGADO
KANIMAMBO**