

SIDIK

VULNERABILITY INDEX DATA INFORMATION SYSTEM

Irawan Asaad, PhD

Directorate of Climate Change Adaptation
Directorate General of Climate Change
Ministry of Environment and Forestry
INDONESIA



(sidik.menlhk.go.id)



Incheon, June 2024

The Importance of Vulnerability Index

■ INDONESIA

Archipelagic Country, Mega-biodiversity & Highly Populated [*Prone to Climate Change Impact*]

■ INCREASE IN FREQUENCY & SEVERITY

[*Affecting ecosystem services, and hydrometeorological disaster*]

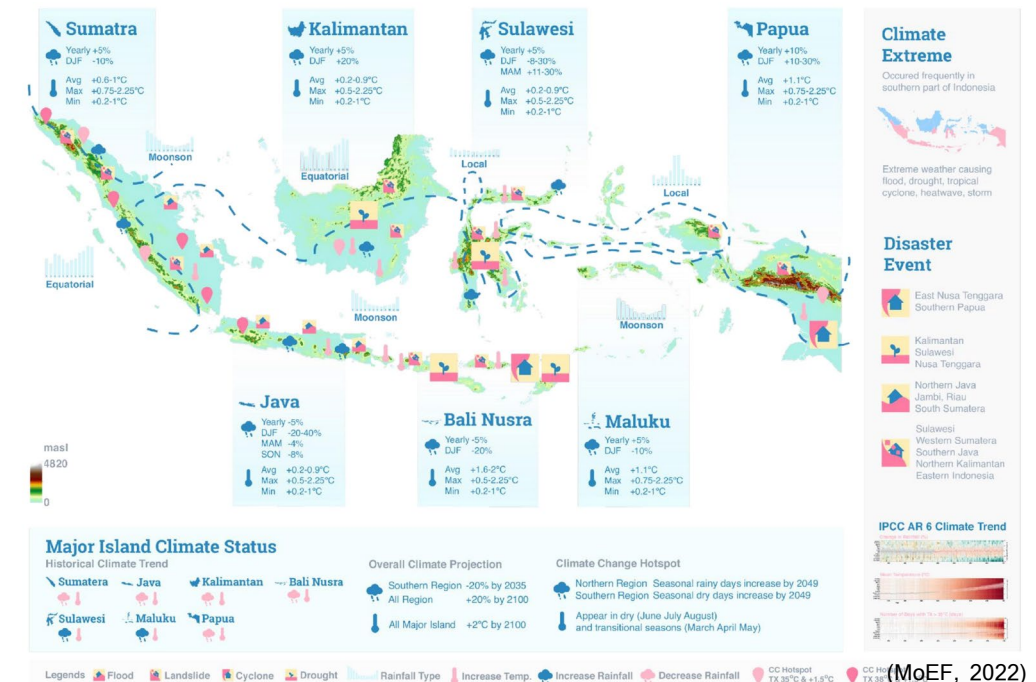
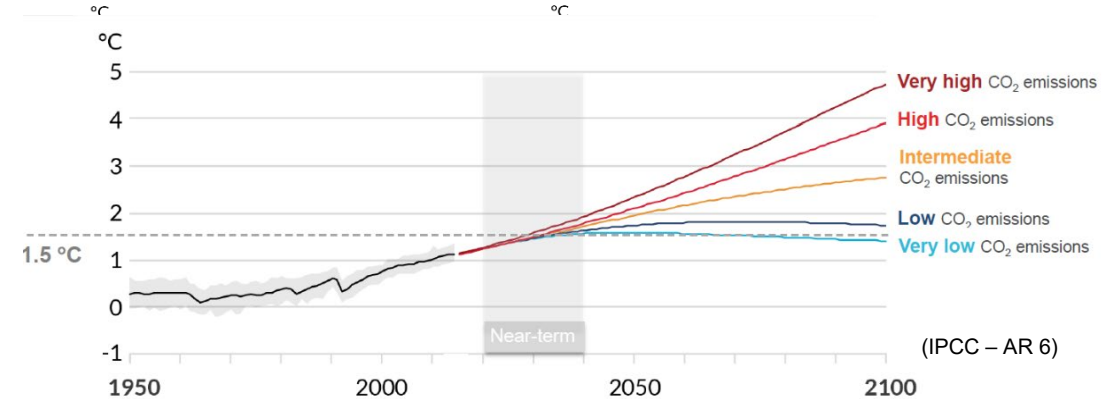
■ INDONESIAN COMMITMENT

[*NDC, LTS-LCCR, FOLU Net-Sink into ecosystem/landscape, economic/livelihoods, social resilience*]

■ VULNERABILITY INDEX

[*Scientific based to mainstream adaptation aspect into planning*]

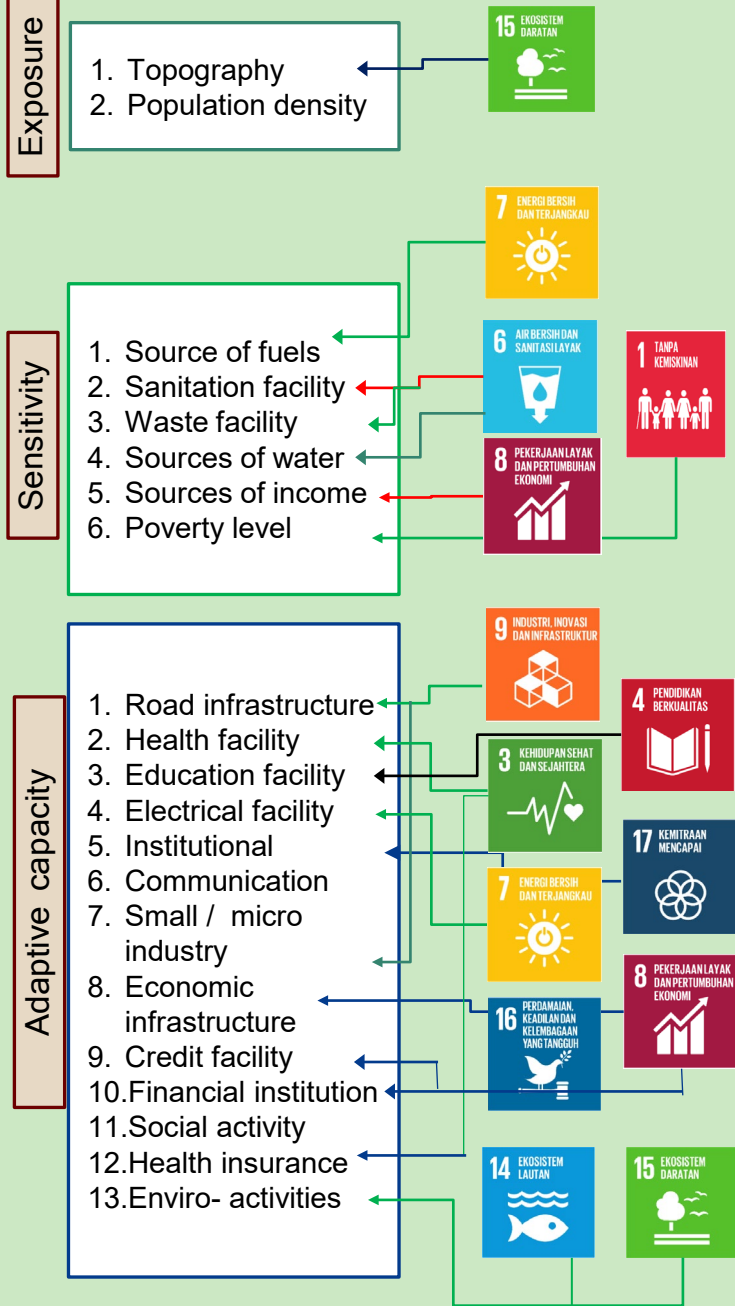
Changes in global surface temperature relative to 1850-1900



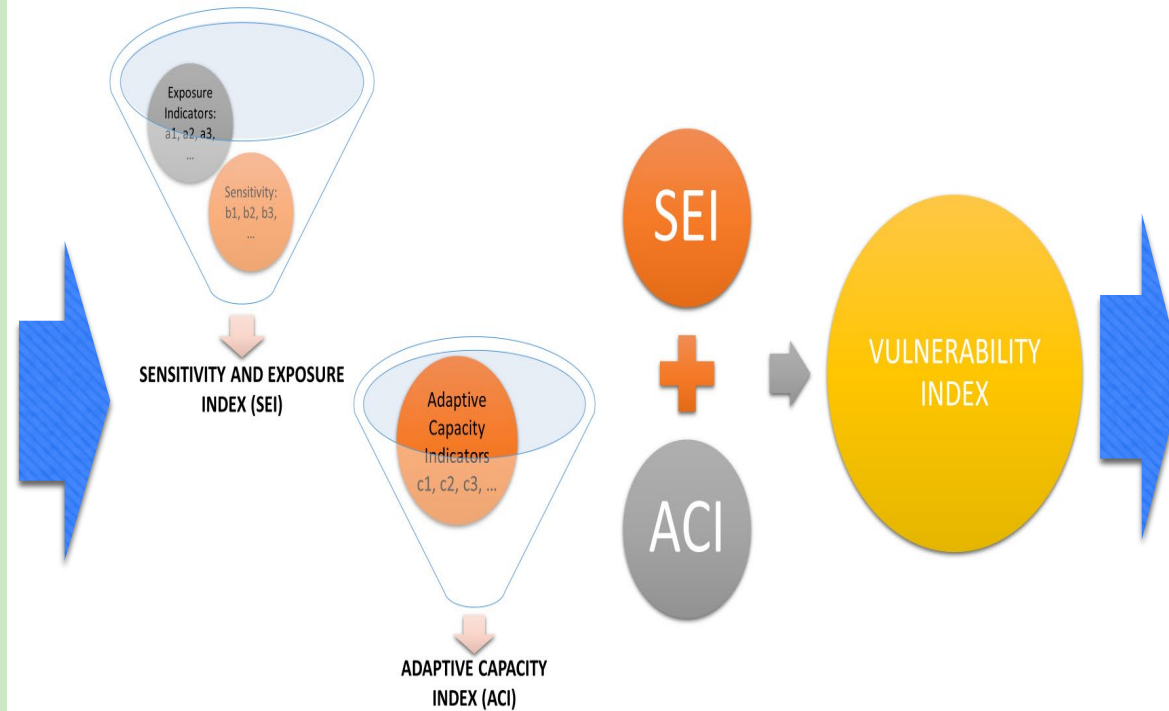


Vulnerability Index Data

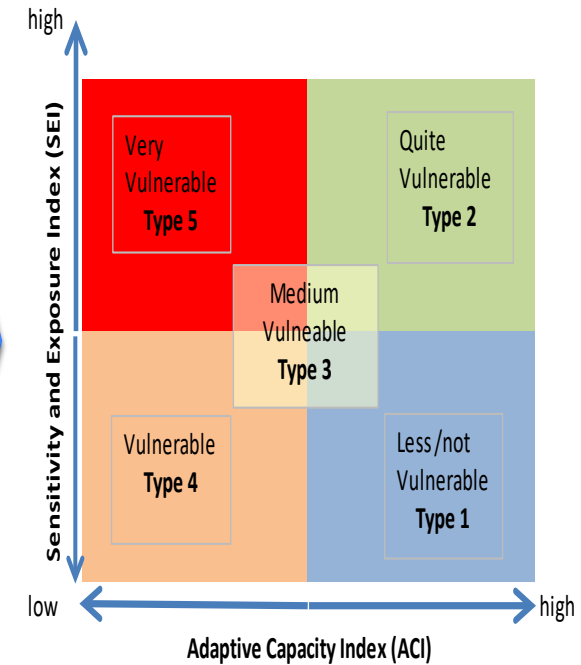
INDICATOR



SCHEMATIC ANALYSIS



RESULT





Advantage

1. Support governance transformation
2. Mainstreaming climate resilience :
 - National/sub national Development Planning
 - Spatial planning act/regulation/report
 - Strategic Environmental Assessment
 - Climate Change Adaptation Action Plans (sub - national)
3. Capacity development and awareness tools,
4. Information system development and integrated database on climate vulnerability data,



Thank You

Directorate of Climate Change Adaptation
Directorate General of Climate Change
Ministry of Environment and Forestry
INDONESIA



ditjen.ppi@menlhk.go.id



[@ditjenppiklh](https://twitter.com/ditjenppiklh)



[@ditjenppiklh](https://www.instagram.com/ditjenppiklh)



[proklam_klhk](https://www.youtube.com/proklam_klhk)



[@DITJENPPI.KLHK](https://www.facebook.com/DITJENPPI.KLHK)

