



MINISTRY OF LABOUR
AND SOCIAL
PROTECTION

LEAVING NO ONE BEHIND

***MINISTRY OF LABOUR AND SOCIAL
PROTECTION, NARANTUYA.R***

"POPULATION"

WORLD POPULATION: 7.63 billion

ASIAN POPULATION: 4.54 billion

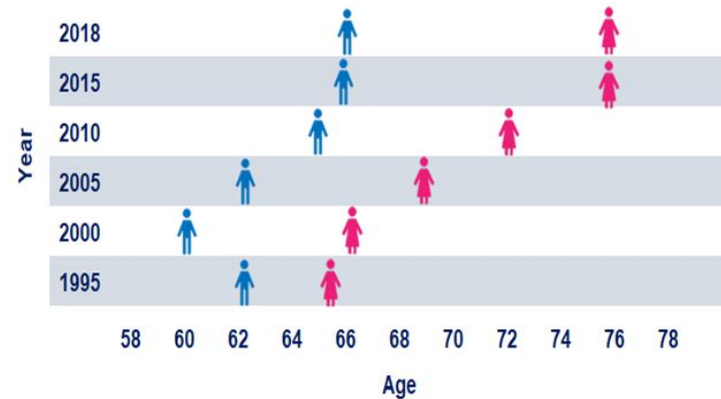
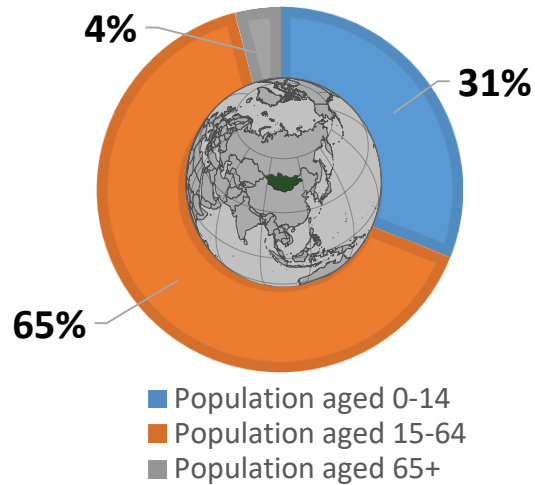
POPULATION MONGOLIA: 3 238 479

Land area: 1,564,116 km²

GDP: \$43 174 billion

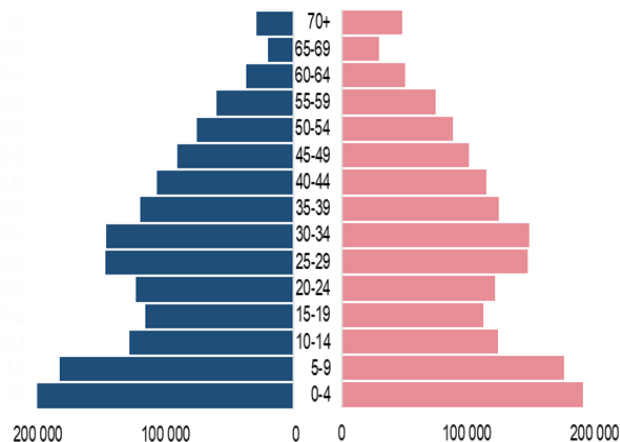
Capital: Ulaanbaatar

Official language: Mongolia

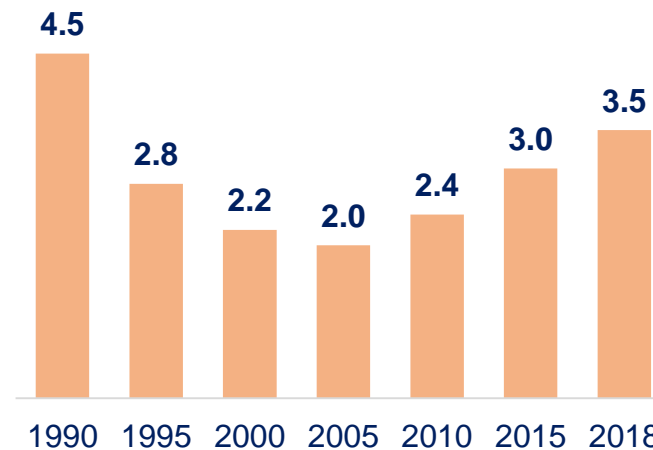


1995-2000	68.07	63.29
2005-2010	71.27	66.66
2015-2020	74.73	69.92

Population pyramid, 2018



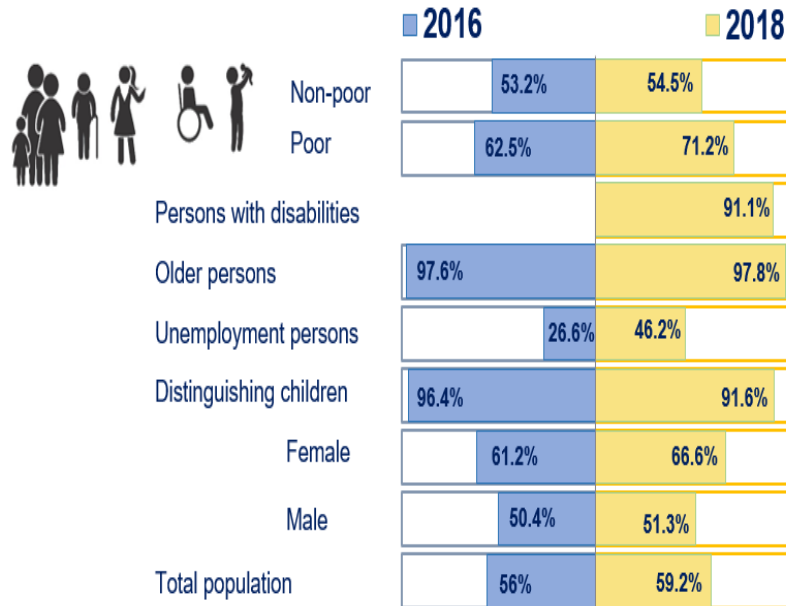
TFR, 1990-2018



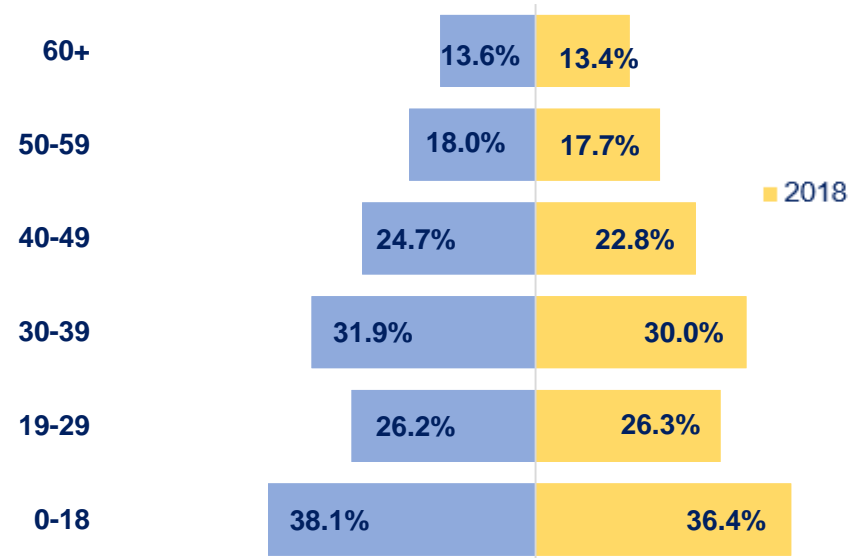
Population	1990	2018
Total population (000)	2 153.5	3 238.5
Population density (per km ²)	1.4	2.1
Total fertility rate	4.5	2.9
Child dependency ratio	77.4*	48.3
Old-age dependency ratio	7.5*	6.3

"POVERTY ERADICATION AND EMPLOYMENT"

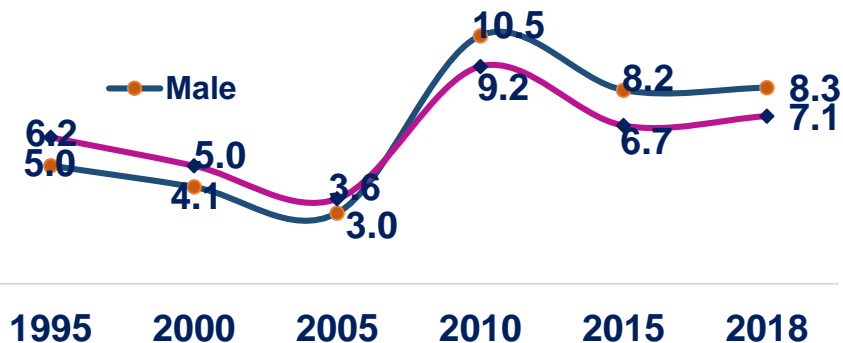
Proportion of population covered by social protection floors/systems



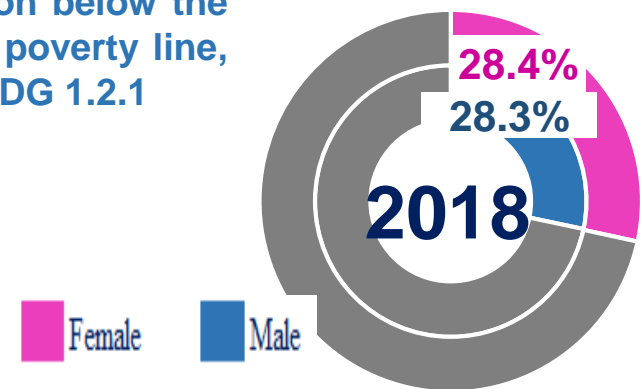
Proportion of population below the national poverty line, by age group, SDG 1.2.1



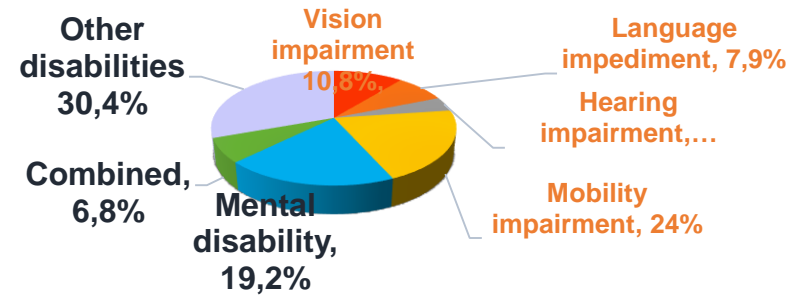
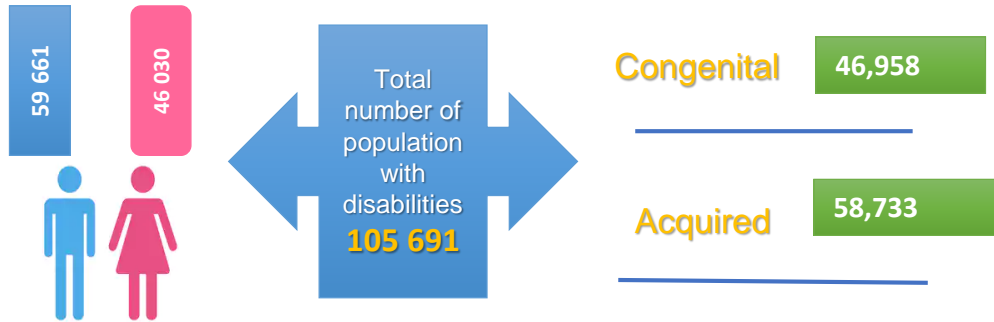
Unemployment rate, by sex, Mongolia SDG 8.5.2



Proportion of population below the national poverty line, by sex SDG 1.2.1



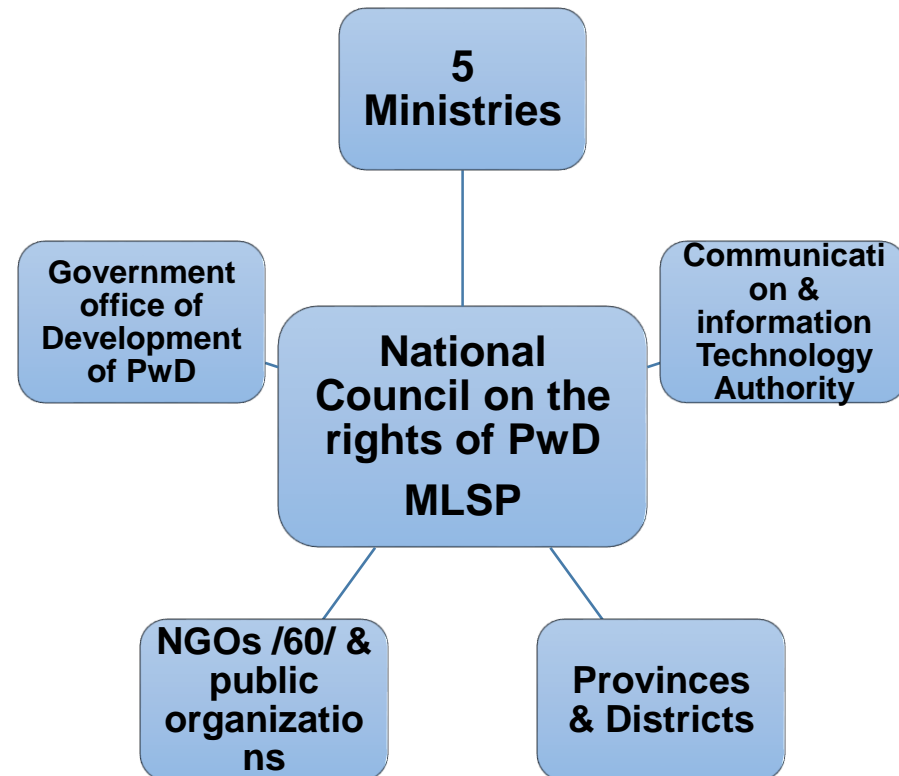
PERSONS WITH DISABILITIES



LEGAL ENVIRONMENT FOR PWDS

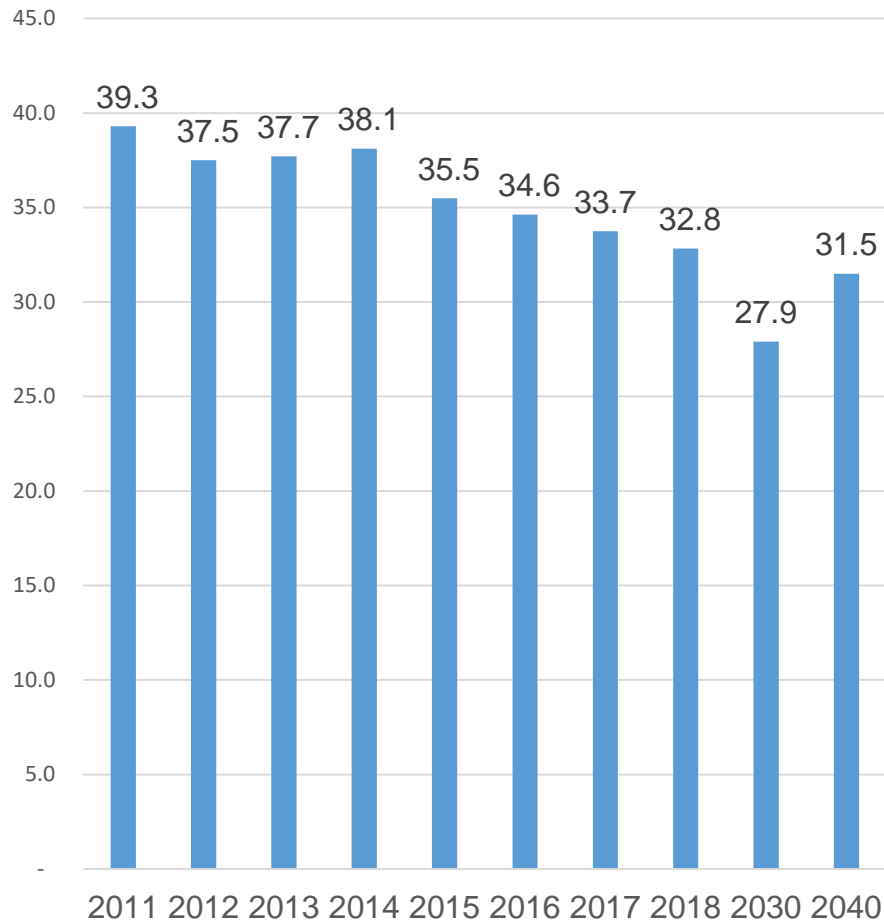


NATIONAL MECHANISM FOR PWDS



YOUTH IN MONGOLIA

Percentage of youth in total population



Law on Youth Development /2018/

27300 young people,
35.5%

Encompassing 7 articles and
24 clauses



National program on Youth Development /2019/

Civil service

NGOs & youth

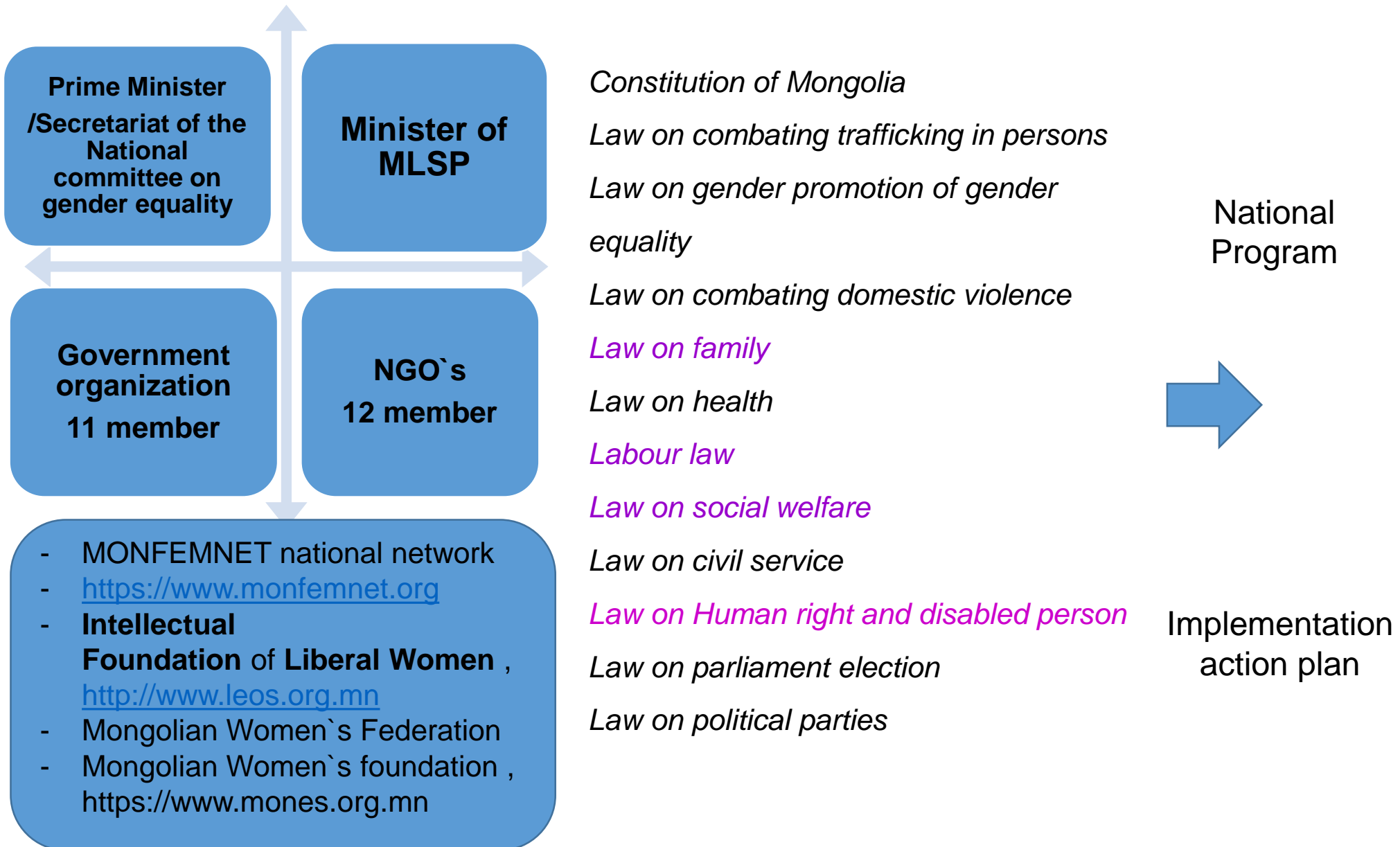


Youth Development National Council Prime Minister

Youth Development
Center /National level 32/

Sub-Youth Union /320/

MECHANISM FOR WOMEN OF MONGOLIA



SUMMARY

Strengths

- Legal environment created.
- Conventions ratified.
- National laws & Programs developed.
- Governmental institution dealing with women, youth & PwD established.
- Statistical data on PwDs and Youth improved.
- International cooperation is expanding such as UNDP, WB, UNICEF, ADB, JICA etc.

Opportunities

- Government`s willingness & initiatives for cooperation with NGOs & civil society.
- Sub-councils under ministries and in provinces, capital city and districts.
- Social protection assessment based national dialogue /Assessment based national dialogue (ABND) on social protection and employment support in Mongolia./

Weaknesses

Despite strengths;

- Weak linkage and coordination among ministries and focal points
- Low implementation of legislation in real life
- Cooperation between Government NGOs is still weak.
- NGO`s capacity is still weak.
- Budgetary allocations are not yet gender sensitive
- Low access to information.
- Lack of evidence based survey.

Risk

- Unstable political environment (makes hard for government official)